
Nordahl's Tidende

FOUNDED
FEBRUARY 16, 1946
SONS OF NORWAY, NORDAHL GRIEG LODGE 52

Volume 57 No. 11

November 2011

Meet 2nd & 4th Fridays

En hilsen fra Presidenten

Dear Friends,

The rain is coming. Actually, the rain has started so check your windshield wipers and tires. We need everyone to make it down to the hall to help, make and enjoy all the upcoming dates.

This is the time of year we enter the beginning of the holiday season. At our next business meeting we will get together for what's called the "Kick-Off Lutefisk/Meatball Wine and Cheese Party." The timing is a bit off due to our Lodge calendar and the fact that we make our meatballs on the Sunday, Nov. 6th beforehand. Nevertheless, come on down and join in the festivities at both events. Both of these start in earnest our preparations for our annual Lutefisk/Meatball gala. "Velkommen to Alt" and "Tusen Takk."

We've also reached that time of year when we celebrate Thanksgiving which was first celebrated in the fall of 1621. We, as they the colonists, have struggled through this year with many hardships, jobs, bank failures, mortgage losses, to name a few. Many families have been affected. However, we still have much to be thankful for. So let us give thanks for our common heritage and the friendships it has brought. I wish each and everyone of you a Happy Thanksgiving!

Ha Det Bra!

Ginny Hansen, President

State Fair Social

We had a grand time at our Minnesota State Fair social in September.

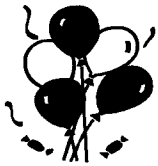
Members brought seasonal side dishes and desserts to accompany hot dogs and condiments provided by the lodge. Meg Laycock and John Stubblebine used their modern, electrically powered ice cream freezer to make vanilla ice cream.

Social Director Kathy Whitesel provided an old-fashioned hand-crank freezer and recruited volunteers to help with the production of her lemony, custardy vanilla confection that Vicki Everly reported was just like the citron fromage she has enjoyed in Norway. Kathy's able helpers at the

Inside This Issue

<i>Birthdays</i>	2
<i>Chairs! (Yes Again)</i>	2
<i>Lefse Help Needed</i>	2
<i>Nyheter Fra Solveig Club</i>	3
<i>Thank You For Scholarships</i>	3
<i>From The Financial Secretary</i>	4
<i>Open Invitation</i>	4
<i>Lutefisk Dinner Progress</i>	4
<i>Stoughton Folk Dancers</i>	5
<i>The Thanksgiving Story</i>	5

Happy Thanksgiving!



November Birthdays

01 Russ Behel	16 Cassandra Leventon
01 Wayne Stavang	18 Karen Vogelhuber
02 Virginia Jolly	19 Olaug Hanson
03 Bjorn Haaberg	21 Jane Marshburn
04 Gareth Ward Hagen	24 Sverre Knapstad
04 Leo Meyer	24 Greg Ansok
07 Pamela Johnson	26 Oeistein Nyberg
08 Eivind Taaje	26 Virginia Unruh
09 Sharon Mellott	26 Vicki Everly
10 Christine Kramer	27 Garrett Hansen
15 Ronald Fredlund	29 Margaret Laycock
15 Tom Marshburn	30 Jeffrey Bennett
16 Paul Dybdahl	30 Graham Hansen

Gratulerer med dagen!

crank included Janet Pankratz, Erline Mello, Fred Hymans, and Marv Bertelson.

The dessert competition brought in only a few entries, but all were yummy. After a difficult deliberation, the judges (Vicki Everly, Lois Bertelson, Don Slama, and Fred Hymans) awarded first prize to Ann Herbert for her apple crisp, and second prize to Joyce Cosce for her Grandma's Apple Brown Betty.

Bill Likens entertained us after dinner with a selection of Austrian and Norwegian tunes.

Thanks to John Stubblebine and Fred Hymans for tending the bar at the social. Thanks also to Larry Hulberg and to Richard and Harriet Candelaria for help setting up the hall, and to Larry for invaluable kitchen assistance. And to everyone who brought good stuff to eat and had a good time!

Chairs! (Yes, Again)

Thank you so very much to everyone who has donated chairs for the lodge, in memory or in honor of loved ones and friends. Don Slama reports that we're really close to having the number we need. But we aren't quite there yet. We could still use 50 more to make up the full complement of matching, padded chairs. Single-chair donations are very welcome; one chair costs \$15.00.

If you haven't had a chance to donate a chair yet-- Now is the perfect time! One chair in memory of Grandma Sophie who loved meatballs. One chair in honor of your sweet spouse who doesn't understand why you like herring, but buys it for you anyway. One chair in honor of yourself, because you appreciate a bargain (and these are available at a very reasonable cost). One chair for your kitty who curls up in your lap every time you sit down (on a chair!). The possibilities are endless.

To donate your chair, call Don Slama at (408) 243-1592.

Lefse Help Needed!

Please join us at the hall the weekend of November 12-13 as we prepare lefse for the upcoming lutefisk dinner.

All are welcome! No experience necessary!

We will be ready to start baking on both Saturday and Sunday at 8:30 AM. Coffee, breakfast goodies, and lunch will be provided to all volunteers.

If you have any questions or would like to volunteer, please call Elderid Everly at 650-961-9817 or email Vicki Everly at: vicki.everly2@gmail.com

Thank you!
Vicki Everly

*Nyheter fra
Solveig Club*



We celebrated Halloween early, complete with "Trick or Treat". Shirley Shoup served us pumpkin pie, and our treats.

Thank you to everyone who donated toys, games and other articles. We were busy wrapping for our popular grab bags at our bazaar.

We were pleased to welcome a new member. Ellen Sande joined our Solveig Club.

We were sad to learn our own Esther Tiff had passed away. Those of us who are fortunate to have one of her embroidered dish towels is indeed fortunate. Each one is a work of art. She was always a delight to visit with, and work with her. At every Lutefisk Dinner she presided over our "bread room" and was there to accept the order early Friday morning.

We extend an invitation to join us on the second Wednesday of each month. We offer conversation, coffee and dessert.

Honor your veteran on November 11th. Fly your flag.

Have a great Thanksgiving with family.

Drive carefully.

Ha det bra,
Elderid Everly



Lodge Directory

Please remember to pick up your new Lodge Directory at the Lutefisk Dinner.

Thank You for Scholarships

Dear Mrs. Everly,

My name is Donald Hansen and I would like to thank you and the ladies of the Solveig club very much for giving me the half scholarship so I could have the opportunity to go to camp again next year.

Thank you very much this means a lot to me.

Sincerely, Donald Hansen

Thank you very much for the scholarship for \$250. I am so grateful to receive this amount in that it will help me pay for my up coming fall classes. Your gift has helped me further my education and will help my future of becoming a teacher.

Thanks again, Jessica Hansen

Dear Solveig Sewing Club Scholarship Committee,

Thank you so much for your continued generosity. I am grateful everyday for your support.

Sincerely, Amanda Sorensen

Dear Solveig Club Members,

I want to express my gratitude to you for selecting me for the Solveig Club Scholarship. I am truly honored to have been chosen as the winner and will be sure to put the money to good use (most likely books!). You all are a very special part of this lodge! Thank you so much for selecting me as the recipient of the award.

Sincerely,

Laura Hulberg

From the Financial Secretary

No new members this month. Its getting close to Christmas - keep in mind that you can give Sons of Norway Memberships as gifts.

Please change the following addresses:

Richard and Harriet Candelaria
5078 Tiberan Wy,
San Jose, CA 95130

Jody Pedersen
5074 Elester Dr
San Jose, CA 95124

Make the changes in your lodge directory, and/or keep this copy of the Tidende to make changes in your directory.

The lodge directories will be available at the Lutefisk Dinner if you have not picked it up at a meeting or social. Postage is expensive.

Unfortunately, we have seven (7) members on the Past Due List. Please pay your dues, your lodge needs you.

Kari Warner, Financial Secretary
408-248-5046 - karia107@earthlink.net



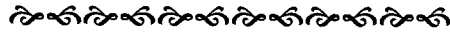
Open Invitation

This is an open invitation to all our members to come and put in a few hours during Lutefisk Preparations and/or during the dinner. At least attend the dinner. This is our annual fundraising, and we need all the help we can get. Our lodge has a fantastic "Core Group", members of this group all give 150% of their time each year. You are encouraged to join this group - its free!! You will not be expected to spend more time that what

you are willing or able to give.

If you are planning to come and eat, why not work up an appetite by helping pouring coffee or serving food, re-setting tables between seatings etc.

You are working, you say? That is a good thing, especially nowadays, but maybe you can still squeeze in a little time to help, that way you also meet your fellow lodge members.



Lutefisk Dinner Progress

As told earlier, 660 flyers were mailed out, so far 13 have been returned - people just don't let us know when they move. (ha-ha). 19 flyers were returned with a new forwarding address, and those were re-mailed. Seems like our mailing list is pretty accurate. This does not mean that everybody receiving a flyer will show up, but I also receive phone calls from prospective guests who wants to make sure we send them a flyer next year even if they cannot make it this year.

As you can see, my mailman is busy, I tell him its job security. My phone is also busy, and my phone will get busier the closer we get to the dinner dates.

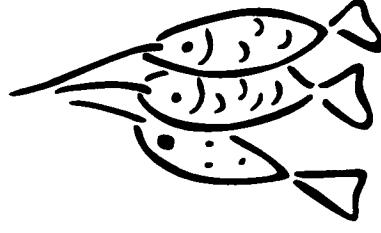
Just received another 61 envelopes with orders, seeing the names on the return address that have become so familiar over the past 5 years.

Now, I best get really busy. Did you order your tickets yet?

Kari Warner



Failure is only a temporary change in direction to set you straight for your next success. Only those who dare to fail greatly can ever achieve greatly.



The Lutefisk is Coming! The Lutefisk is Coming!

The annual Lutefisk Dinner is a wonderful tradition for our lodge and great fundraiser, but we need your help to make it happen. This is your lodge – so please get involved!! With everyone's help we can make this year the best ever!

There are many who give tirelessly of their time year after year. But this is something that requires a lot of effort and we need fresh blood. Plus, it's fun!

Please call the chairpersons listed below to let them know you are willing to help.

Calling or e-mailing in advance makes it easier to plan. If you don't know where you're needed or can simply help serve, contact Victoria Slama, the Volunteer Coordinator. This includes the many young people who turn out each year to serve. We need to hear from you in advance so we know whom we can count on. Many thanks!

General Chairpersons:

Larry Hulberg (408) 826-4300 larry@hulberg.com
Harry & JoAnn Bjerkhoel (707) 966-0219 harryjoann@gmail.com

Volunteer Coordinator:

Victoria Slama (831) 459-8834 victoria_slama@baymoon.com

Preparation and Dinner Schedule:

November 6 th	(Sun)	Meatballs	Kristen Hulberg and Janie Kelly
November 12 th and 13 th	(Sat & Sun)	Lefse Making	Elderid Everly and Vicki Everly
November 27 th and 28 th	(Sun & Mon)	Cookie Making	Leslie Jones
November 30 th	(Wed.)	Lutefisk & Hall Setup	Harry Bjerkhoel and Larry Hulberg
December 1 st	(Thurs.)	Table settings	Elderid Everly and Vicki Everly
December 2 nd and 3 rd	(Fri & Sat)	Lutefisk Dinner	Kate Slama

December 4th

(Sun)

Hall Clean-up

Harry Bjerkhoel and Larry Hulberg

Preparation and Dinner Committee Chairs:

Committee	Chairperson	Telephone	E-mail Address
Tickets/Publicity	Kari Warner	(408) 248-5046	karia107@earthlink.net
Hall Decoration	Kathy Whitesel	(408) 258-2562	saxonytarn@aol.com
Coffee	Garrett Hansen	(408) 244-2940	facilitiesguy2001@yahoo.com
Cookies	Leslie Jones	(408) 927-9966	lesbehel@pacbell.net
Lefse Making	Vicki & Elderid Everly	(650) 961-9817	Vicki.everly2@gmail.com
Meatballs	Kristen Hulberg	(408) 828-3503	khulberg@gmail.com
Potato Crew	Andy Hunsbedt	(408) 353-3673	anstein@msn.com
Kitchen Crew	Victoria Slama	(831) 459-8834	victoria_slama@baymoon.com
Lutefisk Crew	Harry Bjerkhoel	(707) 966-0219	harryjoann@gmail.com
Dining Room	Kate & Don Slama	(408) 243-1592	KSlama@valleywater.org
Solveig Room	Elderid Everly	(650) 961-9817	Vicki.everly2@gmail.com
Music	Harry Bjerkhoel	(707) 966-0219	harryjoann@gmail.com
Parking	Mark Hunsbedt	(408) 206-0351	markhunsbedt@hotmail.com
Recycling	Russ Behel	(408) 259-4021	ngldance@frys.com

Coming in Late March Stoughton Folk Dancers

You may have read of the Stoughton Norwegian Dancers, a talented group of high school students from Stoughton, Wisconsin. Started in 1953, this group performs lively renditions of Norwegian folk dances in authentic bunader. The ensemble of twenty dancers and three musicians will arrive in San Francisco on March 30 for a tour of Northern California, starting with a performance and potluck at Nordahl Grieg Lodge that evening.

Details of the tour are still being worked out, but we have been asked to provide housing for the students for Friday night and possibly another night. Pamela Groth of Frey Lodge in Santa Rosa is helping arrange performances and lodging in her area.

Mark your calendar for the performance, and please let Meg Laycock or Kari Warner know if you have a spare room to offer for one or two teenagers.



The Thanksgiving Story

Most stories of Thanksgiving history start with the harvest celebration of the pilgrims and the Native Americans that took place in the autumn of 1621. Although they did have a three-day feast in celebration of a good harvest, and the local natives did participate, this "first thanksgiving" was not a holiday, simply a gathering. There is little evidence that this feast of thanks led directly to our modern Thanksgiving Day holiday. Thanksgiving can, however, be traced back to 1863 when Pres. Lincoln became the first president to proclaim Thanksgiving Day. The holiday has been a fixture of late November ever since.

However, since most school children are taught

that the first Thanksgiving was held in 1621 with the Pilgrims and Indians, let us take a closer look at just what took place leading up to that event, and then what happened in the centuries afterward that finally gave us our modern Thanksgiving.

The Pilgrims who sailed to this country aboard the Mayflower were originally members of the English Separatist Church (a Puritan sect). They had earlier fled their home in England and sailed to Holland (The Netherlands) to escape religious persecution. There, they enjoyed more religious tolerance, but they eventually became disenchanted with the Dutch way of life, thinking it ungodly. Seeking a better life, the Separatists negotiated with a London stock company to finance a pilgrimage to America. Most of those making the trip aboard the Mayflower were non-Separatists, but were hired to protect the company's interests. Only about one-third of the original colonists were Separatists.

The Pilgrims set ground at Plymouth Rock on December 11, 1620. Their first winter was devastating. At the beginning of the following fall, they had lost 46 of the original 102 who sailed on the Mayflower. But the harvest of 1621 was a bountiful one. And the remaining colonists decided to celebrate with a feast - including 91 natives who had helped the Pilgrims survive their first year. It is believed that the Pilgrims would not have made it through the year without the help of the natives. The feast was more of a traditional English harvest festival than a true "thanksgiving" observance. It lasted three days.

Governor William Bradford sent "four men fowling" after wild ducks and geese. It is not certain that wild turkey was part of their feast. However, it is certain that they had venison. The term "turkey" was used by the Pilgrims to mean any sort of wild fowl.

Another modern staple at almost every Thanksgiving table is pumpkin pie. But it is unlikely that

the first feast included that treat. The supply of flour had been long diminished, so there was no bread or pastries of any kind. However, they did eat boiled pumpkin, and they produced a type of fried bread from their corn crop. There was also no milk, cider, potatoes, or butter. There was no domestic cattle for dairy products, and the newly-discovered potato was still considered by many Europeans to be poisonous. But the feast did include fish, berries, watercress, lobster, dried fruit, clams, venison, and plums.

This "thanksgiving" feast was not repeated the following year. Many years passed before the event was repeated. It wasn't until June of 1676 that another Day of thanksgiving was proclaimed. On June 20 of that year the governing council of Charlestown, Massachusetts, held a meeting to determine how best to express thanks for the good fortune that had seen their community securely established. By unanimous vote they instructed Edward Rawson, the clerk, to proclaim June 29 as a day of thanksgiving. It is notable that this thanksgiving celebration probably did not include Native Americans, as the celebration was meant partly to be in recognition of the colonists' recent victory over the "heathen natives," (see the proclamation). By then, it had become apparent to the settlers that the natives were a hindrance to their quest for more land, so the good will they shared at the first feast had long been lost.

A hundred years later, in October of 1777 all 13 colonies joined in a thanksgiving celebration. It also commemorated the patriotic victory over the British at Saratoga. But it was a one-time affair.

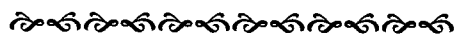
George Washington proclaimed a National Day of Thanksgiving in 1789, although some were opposed to it. There was discord among the colonies, many feeling the hardships of a few pilgrims did not warrant a national holiday. And later, President Thomas Jefferson opposed the idea of having a day of thanksgiving.

It was Sarah Josepha Hale, a magazine editor,

whose efforts eventually led to what we recognize as Thanksgiving. Hale wrote many editorials championing her cause in her Boston Ladies' Magazine, and later, in Godey's Lady's Book. Finally, after a 40-year campaign of writing editorials and letters to governors and presidents, Hale's obsession became a reality when, in 1863, President Lincoln proclaimed the last Thursday in November as a national day of Thanksgiving.

Thanksgiving was proclaimed by every president after Lincoln. The date was changed a couple of times, most recently by Franklin Roosevelt, who set it up one week to the next-to-last Thursday in order to create a longer Christmas shopping season. Public uproar against this decision caused the president to move Thanksgiving back to its original date two years later. And in 1941, Thanksgiving was finally sanctioned by Congress as a legal holiday, as the fourth Thursday in November.

Copyright © 1997-2010 by Jerry Wilson
<http://www.http://wilstar.com/holidays/thankstr.htm>



Sixth District "Century Club"

The Century Club invites individuals and Lodges to become members of our group and help support the maintenance of Camp Norge.

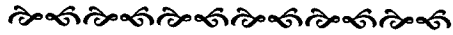
The Club has been in existence since October 1996. In 1999, there were 86 members and as of this date, there are 53 members.

It is amazing how faithful so many people are. Some of our members have never been to Camp Norge, yet they know how worthwhile it is for our future generations to have a place they can call their own.

Half of the dues collected go directly to Camp Norge, and the other half goes into savings with the Sons of Norway. The goal is to grow this sav-

ings into a large enough fund to take care of the maintenance of the Camp, without any other help. If you have any questions, or need a Membership Application, please feel free to call me at (805) 642-0880.

Sincerely, Ordale Johnson, President



Ole and Sven—Pole Installation

There was a Midwestern phone company that was going to hire one team of telephone pole installers, and the boss had to choose between a team of two Norwegian guys and a team of two Irish guys. So the boss met with both teams and said, "Here's what we'll do. Each team will be installing poles out on the new road for a day. The team that installs the most phone poles gets the job."

Both teams headed right out. At end of the shift, Pat and Mike, the Irish guys, came back and the boss asked them how many they had installed. They said that it was tough going, but they'd put in twelve.



Forty-five minutes later, Ole and Sven, the Norwegian guys came back in and they were totally exhausted. The boss asked, "Well, how many poles did you guys install?"

Ole, the team leader, wiped his brow and sighed, "Sven and me, we got three in." The boss gasped, "Three? Those two Irish guys put in twelve!"

"Yeah," said Ole, "but you should see how much they left stickin' out of the ground."

Planning a party or special event?

Welcome to:

Nordahl Hall Banquet & Meeting Center

Perfect for weddings, parties, meetings, & more!

Convenient Campbell-Los Gatos Location

Please contact:

Viking Property Management

(408) 583-3555



SONS OF NORWAY

Did you know?

As a member of Sons of Norway you have access to some of the most competitive life insurance and annuities in the business.

Let's talk.

Fred Hymans

Financial Benefits Counselor

(916) 287-7100

fred.hymans@ingfp.com

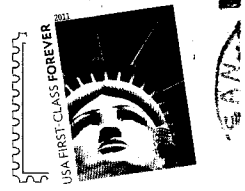
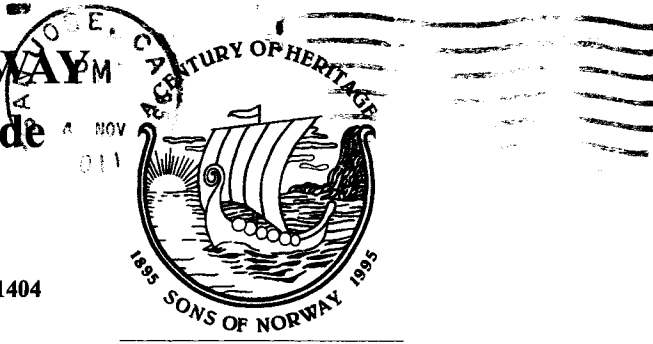
CA Ins. Lic.#0D55562



SONS OF NORWAY

Nordahl's Tidende

Finn Gjerdrum - Editor
 14906 State Highway 88 Sp 19
 Jackson, CA 95642 — 209-257-1404
 Tidende@sbcglobal.net



NEXT DEADLINE FOR PRINTING IS THE 15TH OF NOVEMBER

NORDAHL'S TIDENDE IS PUBLISHED MONTHLY
 NORDAHL HALL
 580 WEST PARR AVENUE • LOS GATOS, CA 95030
 HALL RENTALS (408) 583-3555 • LODGE (408) 374-4454

BUSINESS MEETINGS ARE THE SECOND FRIDAY OF THE MONTH AT 7:30PM
 SOCIALS WILL BE ANNOUNCED IN EACH EDITION OF THE TIDENDE

PRESIDENT	GINNY HANSEN	408-745-1595
VICE PRESIDENT	OPEN	OPEN
SECRETARY	CASSIE LEVENTON	408-226-0140
TREASURER	DUANE OVERBY	408-227-6663
FINANCIAL SECRETARY	KARI WARNER	408-248-5046
SOCIAL CO-DIRECTOR	KATHY WHITESEL	408-258-2562
SOCIAL CO-DIRECTOR	JULIA JAROSHENKO	408-773-1909
CULTURAL DIRECTOR	MEG LAYCOCK	408-255-2111
COUNSELOR	JOANN BJERKHOEL	707-966-0219

Save These Dates

Nov 6, Sun	Meatball Preparation
Nov 11, Fri	Business Meeting
Nov 12 & 13	Saturday & Sunday Lefse Making
Nov 27 & 28	Sunday & Monday Cookie Making
Nov 30, Wed	Lutefisk & Hall Set-up
Dec 2 & 3	Friday & Saturday Lutefisk Dinner

Additional dates will be presented as they become available

LODGE WEB ADDRESS: www.nordahlreg.org

DISTRICT WEB ADDRESS: www.sofn-district6.com

CAMP NORGE, P.O. BOX 622, ALTA, CA 95521 (530) 389-2508